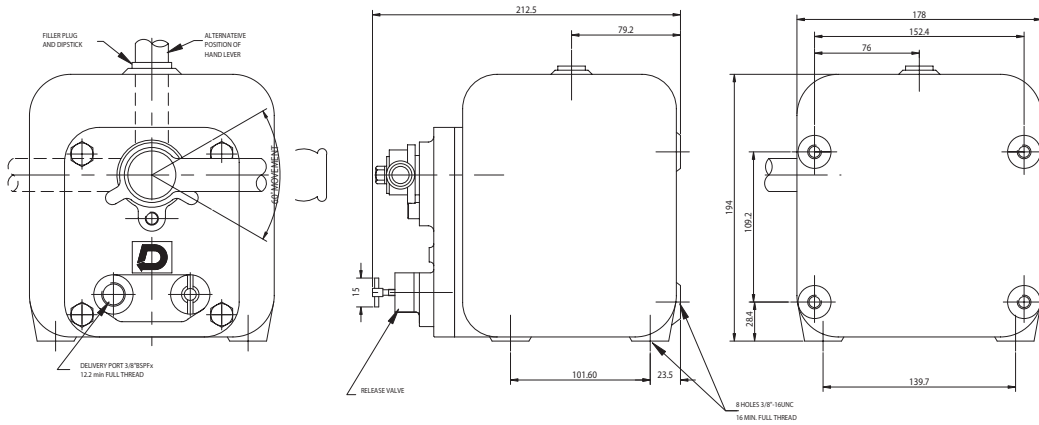


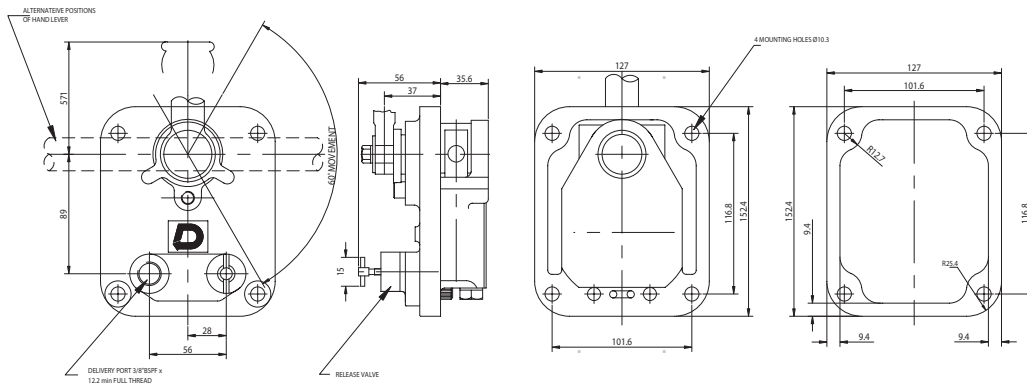


# HAND PUMP

## HAND PUMP WITH RESERVOIR



## HAND PUMP WITHOUT RESERVOIR



**INSTALLATION NOTE:**  
 UNITS MUST BE INSTALLED IN THE POSITION SHOWN  
 THAT IS IN THE VERTICAL POSITION WITH THE HANDLE PIVOT  
 ABOVE THE DELIVERY PORT.

**OPERATIONAL DATA:**

DELIVERY	0.80 in (1.3cm) PER DOUBLE STROKE.
HAND LOAD	MAX. Pressure: 50 lb AT 3000 psi. 23 Kg AT 200 bar.
RESERVOIR CAPACITY	6 PINTS ( 3.4 liters.)
WEIGHT APPROX.	14 lb (6.4 kg.)
APPLICATION	Suitable for use with most mineral based hydraulic fluids of minimum viscosity 10 cST.

ALL DIMENSIONS ARE IN MM UNLESS SPECIFIED.



# DYNAMATIC®

## PUMP-MOTOR ASSEMBLY

---

At Dynamatic Technologies Ltd., we continuously innovate new products, with a view to making things easier and more productive, for the hydraulic user industries.

The Dynamatic® pump-motor assembly is brought to you by one of the most innovative and fast-growing companies in the hydraulic industry today. It not only reduces the cost and space required, but also drastically brings down the mechanical noise levels. Most importantly, it eliminates misalignment problems between pump and electric motor.

### BENEFITS

---

- **PUMP MOTOR ASSEMBLY:** Eliminates misalignment between pump and motor, thereby increasing life of the pump
- **COST SAVING:** By eliminating bell housing and coupling
- **COMPACT DESIGN:** Saves valuable space
- **CONCEALED ROTATING SHAFT:** Safer working conditions
- **LOW DOWNTIME:** Easy replacement of pump
- **REDUCED POWER LOSS:** Transmission losses, due to coupling, are reduced

### APPLICATIONS

---

- Special purpose machines
- Injection moulding machines
- Blow moulding machines
- Machine tools
- Process Industries
- Off-line filtration systems
- Material handling equipment

### CODIFICATION CHART

---

- M 1 0P XXXX**
- **M** Motor
  - **1/2/3/5/7.5** Motor horsepower
  - **0P/1P** Pump series
  - **XXXX** Pump model no.