

### GAUGE ISOLATOR VALVE 6 STATION MODEL – 6s-GIV-PR

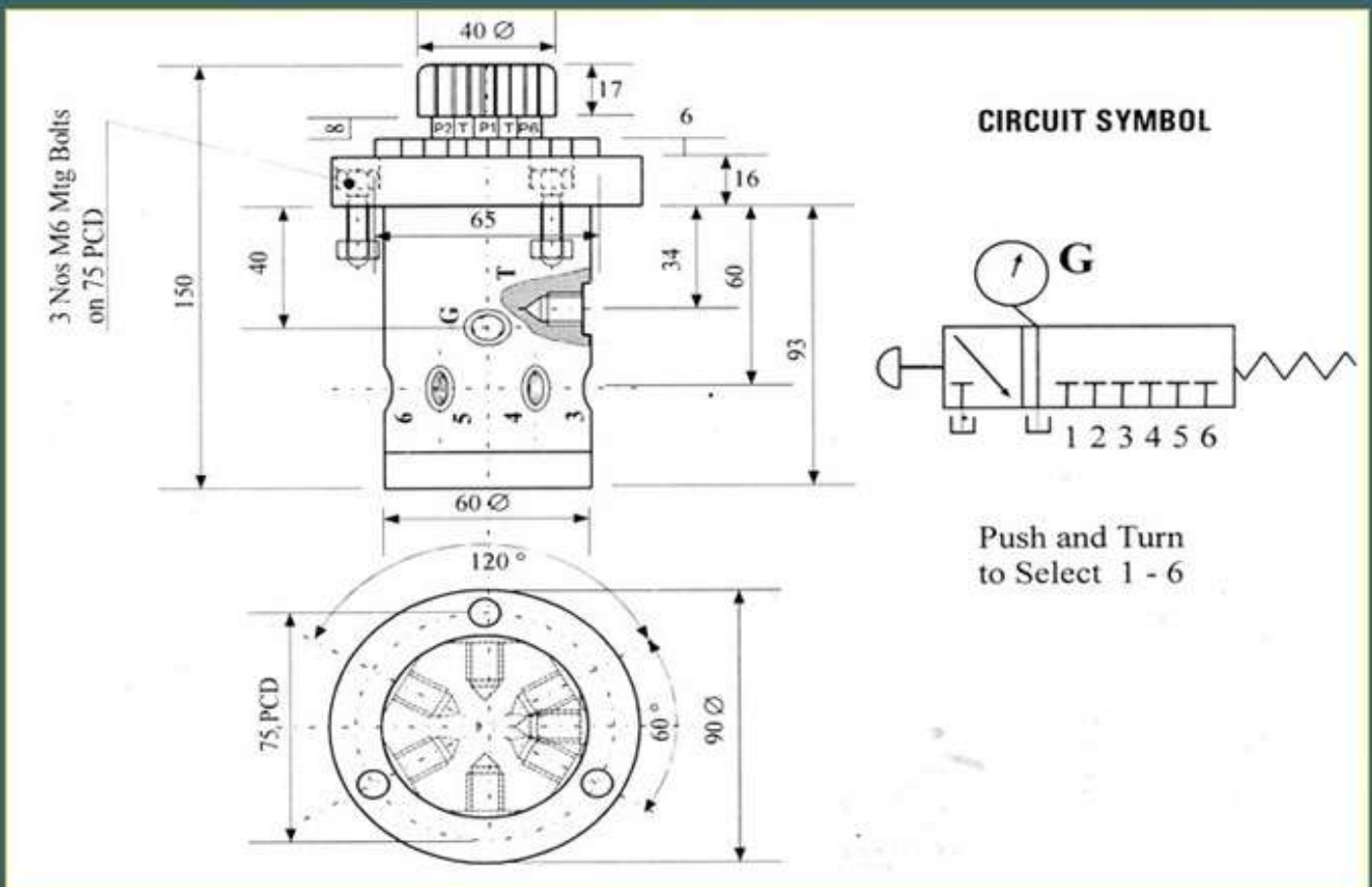
The 6 Station unit is designed for panel mounting and is a highly compact unit which saves panel space by reducing number of pressure gauges. Only one common gauge is required to read different 6 system pressures. This unit is very much useful where more than one gauge reading is required and if any of six station is not being used plug the unused ports. If three ports are used plug No.1, 3 and 5 port to balance the valve dynamically.

#### OPERATION

Turn the Knob for selecting the pressure port and push to read the pressure. In normal condition gauge is vented to tank

#### SPECIFICATION

- All ports ¼" BSP high graded cast Iron Body.
- Maximum working pressure 3000 P.S.I.
- Maximum allowable leakage through tank port 3 to 4 minute at 3000 P.S.I.



### GAUGE ISOLATOR VALVE 2, 3 & 4 STATION

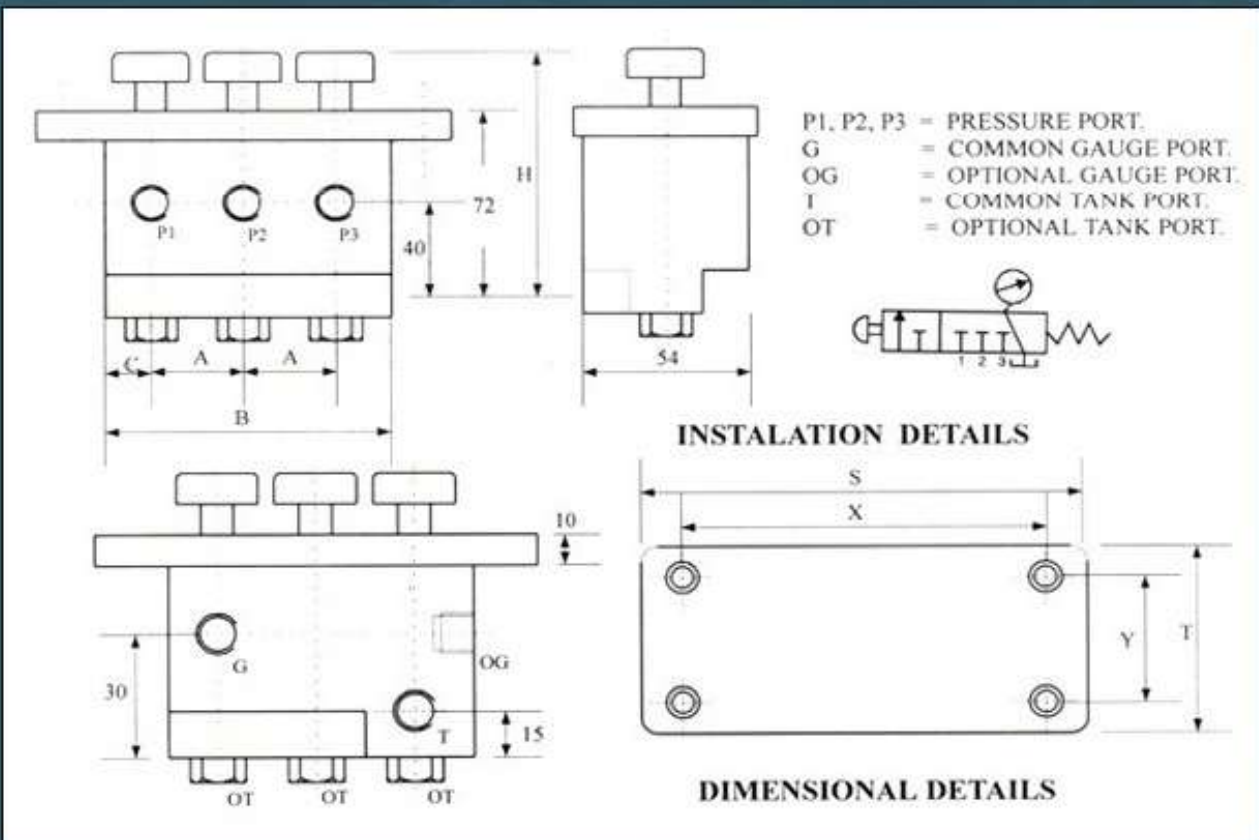
2 Station, 3 Station and 4 Station mult circuit gauge isolator valves are most ideal for use where 2,3 & 4 circuit pressures to be read by a common gauge. Using one gauge to read many circuits reduces instrument cost. Excellent performance available due to separate chamber for each circuit pressure. Easy to operate even at high pressure.

#### OPERATION

By using one of the valve knobs allows the fluid in that particular circuit only to flow around the spool connecting pressure port P to gauge port G. When the knob is released the spool is spring returned to the closed position, thus allowing the fluid to drain from gauge to common take port T.

#### SPECIFICATION

All ports 1/4" BSP female thread. High graded cast iron body. Hardened, ground, lapped and balanced spool made out of high carbon steel. Nitrile seal. Maximum working temperature 30dC – 80dC, Maximum working pressure 0 to 3000 psi. Maximum allowable leakage through tank port 3 to 4 cc per minute. (This leakage does not effect any pressure drop in the system.)



#### DIMENSIONAL DETAILS

PART NO	MODEL	A	B	C	H	X	Y	S	T
2120	2S - GIV - PR	30	65	15	100	80	40	105	60
2140	3S - GIV - PR	30	95	15	100	110	40	135	60
2160	4S - GIV - PR	30	125	15	100	140	40	165	60

## GAUGE ISOLATOR VALVE SINGLE STATION

### SPECIAL DESIGN FEATURES

- Applicable to all ranges of Hydraulic Equipments.
- Maintenance Free, quick and easy to assemble, just fix the screw on the shaft.
- Special modifications to customers' requirement.
- Lengthen or shorten or key way bore of hubs available.
- Permits angular, parallel and axial offset.
- Wide accurately machine surfaces offer easy visual alignment.
- Sleeve made of high graded nylon material, resistant to all hydraulic fluids.
- Concentricity within 0.0008 inches assures centrifugal and dynamic balance, important at high speed.
- Entire range of coupling are available form 0.5H.P to 75 H.P suitable for shaft size 14 mm to 65 mm in diameter.
- High degree of factor of safety.



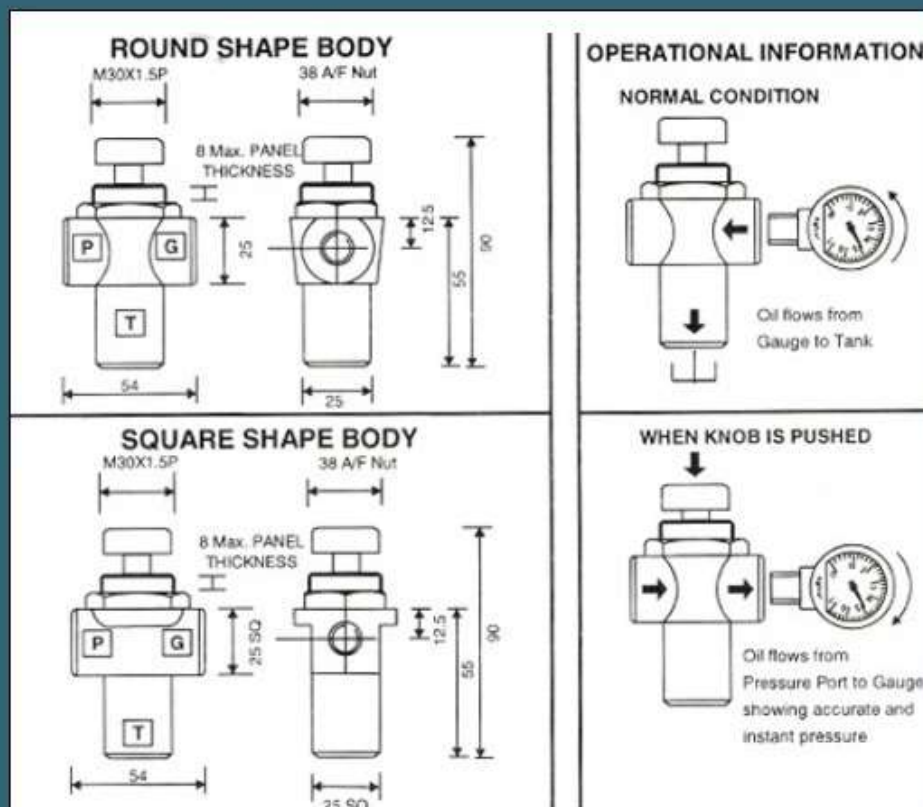
### TECHNICAL SPECIFICATION

- All Ports 1/4" B.S.P female thread.
- Maximum panel thickness 8 mm.
- High grade cast iron body.
- Hardened, ground and lapped spool made out of high carbon steel.
- Nitrile seal.
- Maximum working temperature 30d C to 80dC.
- Maximum working pressure 5000 PSI.
- Maximum allowable leakage through port 1 to 2 cc per minute at 3000 PSI pressure. (This leakage does not effect any pressure drop in the system.)



### OPERATION

In normal condition fluid is completely isolated from the gauge until the knob is pressed. By pressing the knob fluid is connected directly from pressure port P to gauge port G giving instant and accurate reading on the gauge or the manometer. As the knob is released the spring loaded spool closes the pressure port automatically connecting the gauge port G to drain port T. In operation an orifice (0.8mm dia.) in Gauge Port acts as partial snubber, protecting the gauge from damaging pressure surge of fluid as the knob is pressed.



DO NOT ADJUST THE SPRING RETAINER PLUG. IMPROPER ADJUSTMENT OF THE PLUG MAY CAUSE HEAVY LEAKAGE AND DISTURB THE WORKING PRINCIPLE OF THE VALVE.

### ORDERING INFORMATION & MODEL CODE

PART NO	SS	GIV	PR	TL
2110	Single Station	Gauge Isolator Valve	Push to Read	Twist to Lock
2100	Single Station	Gauge Isolator Valve	Push to Read	