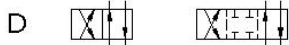
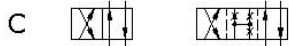
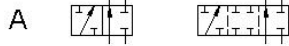
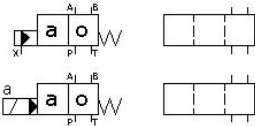
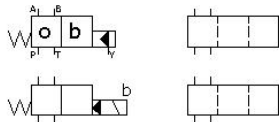


Spool Types

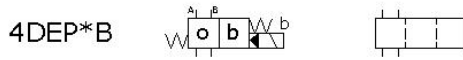
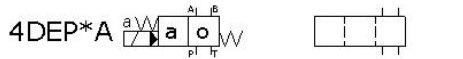
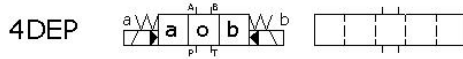
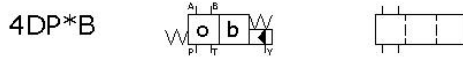
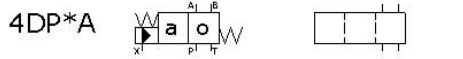
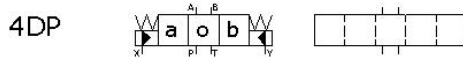
4/2 Way Valve with
"o" and "a" positions



4/2 Way Valve with
"o" and "b" positions



4/3 Way and 4/2⁽¹⁾ Way Valve

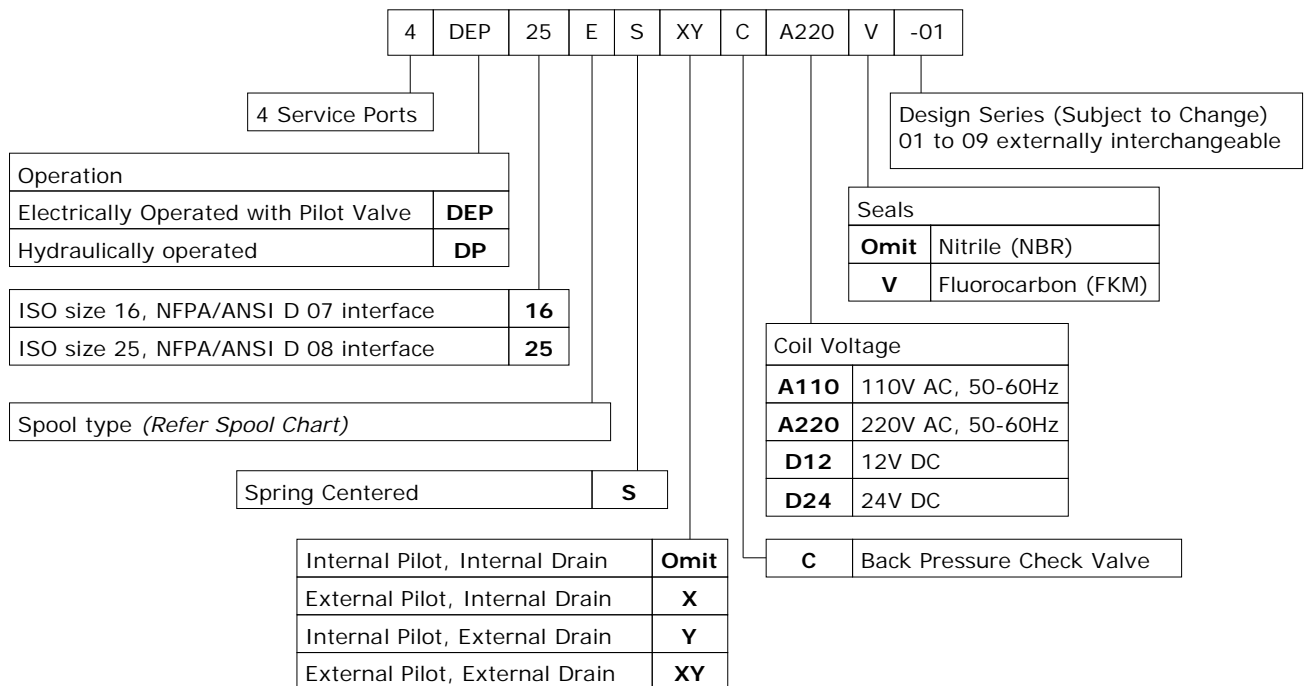


Note:

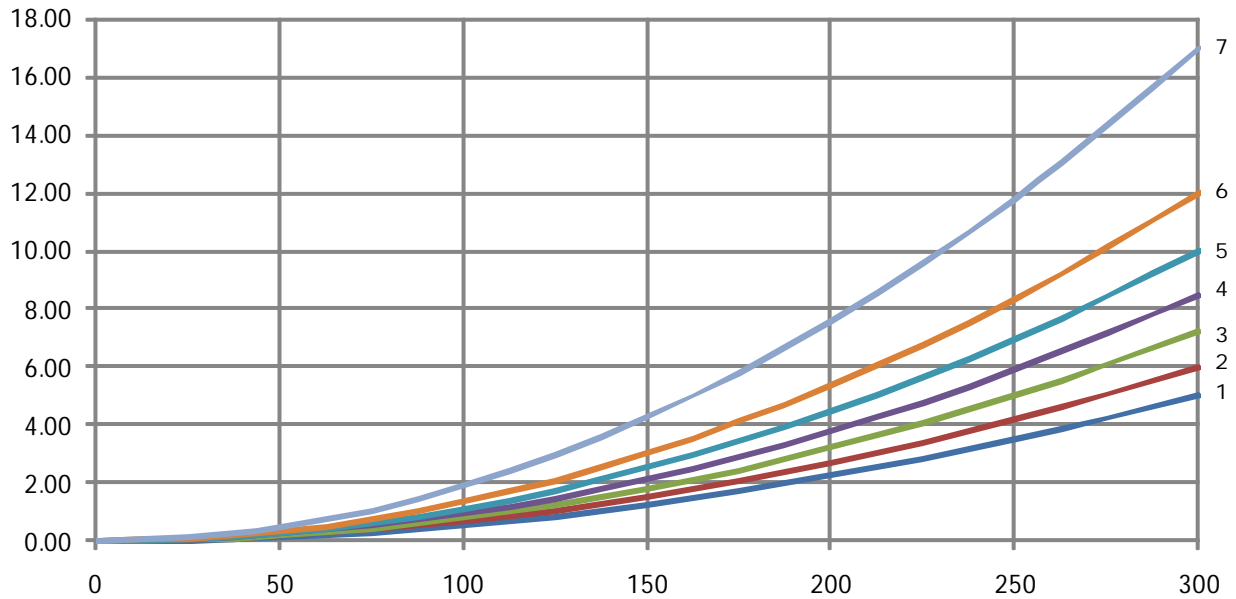
⁽¹⁾ When ordering a spool with only two positions "o" and "a" or "o" and "b", specify the desired position "A" or "B" in model code.

Example: E Spool with "o" and "a" position—4DE06EA220A-01

Ordering Code



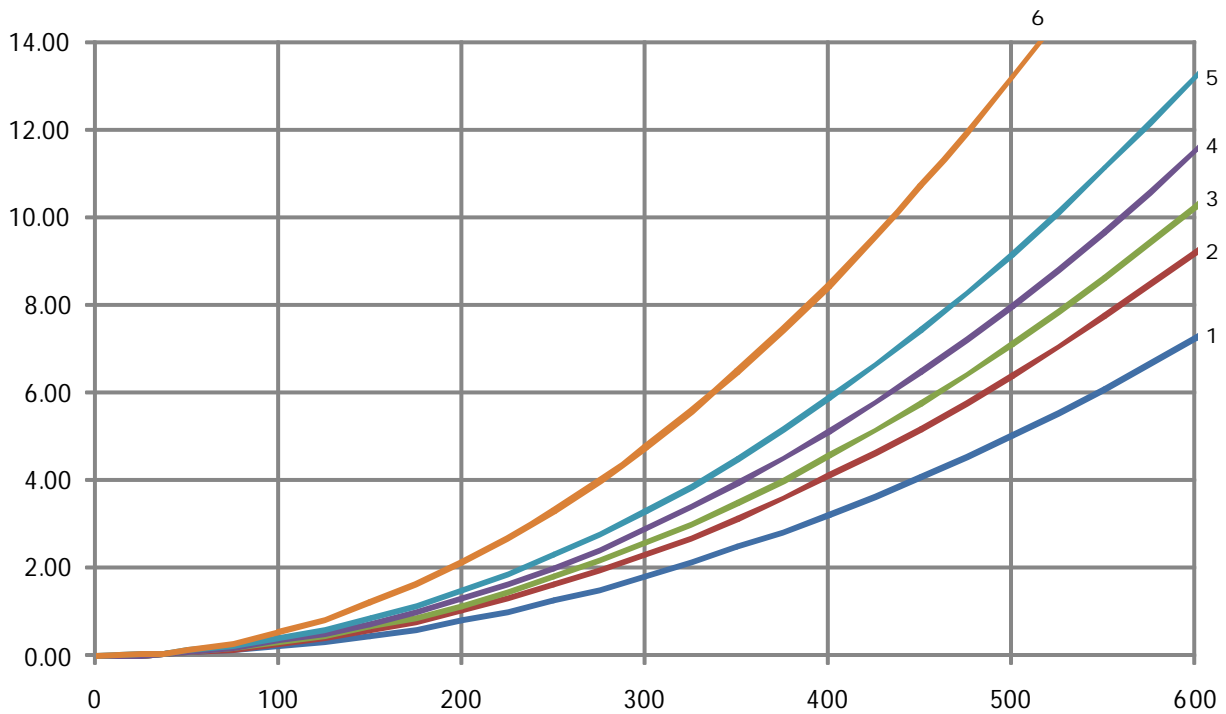
Characteristic Curves 4DP16/4DEP16 (Measured with ISO VG46 Oil @ 40°C ±5°C)



Spool	P->A	P->B	A->T	B->T
C	1	1	5	6
D	1	1	3	3
E	1	1	3	3

Spool	P->A	P->B	A->T	B->T	P->T
G	4	1	5	5	7
H	1	1	5	6	
J	2	2	6	6	

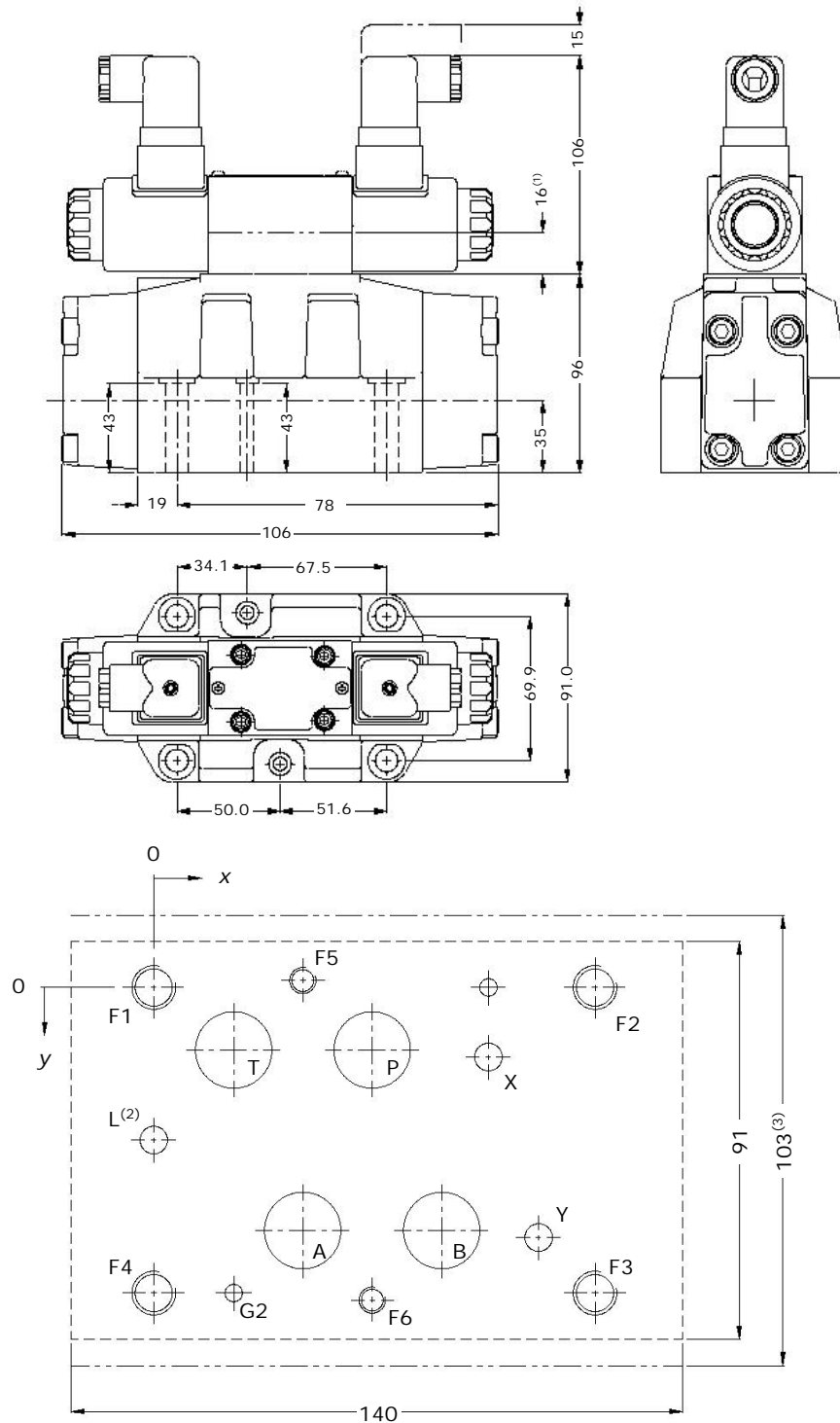
Characteristic Curves 4DP25/4DEP25 (Measured with ISO VG46 Oil @ 40°C ±5°C)



Spool	P->A	P->B	A->T	B->T
C	1	1	1	3
D	4	4	3	4
E	1	1	1	3

Spool	P->A	P->B	A->T	B->T	P->T
G	3	1	2	4	6
H	4	4	3	4	
J	2	2	3	5	

Installation Dimensions 4DP16/4DEP16



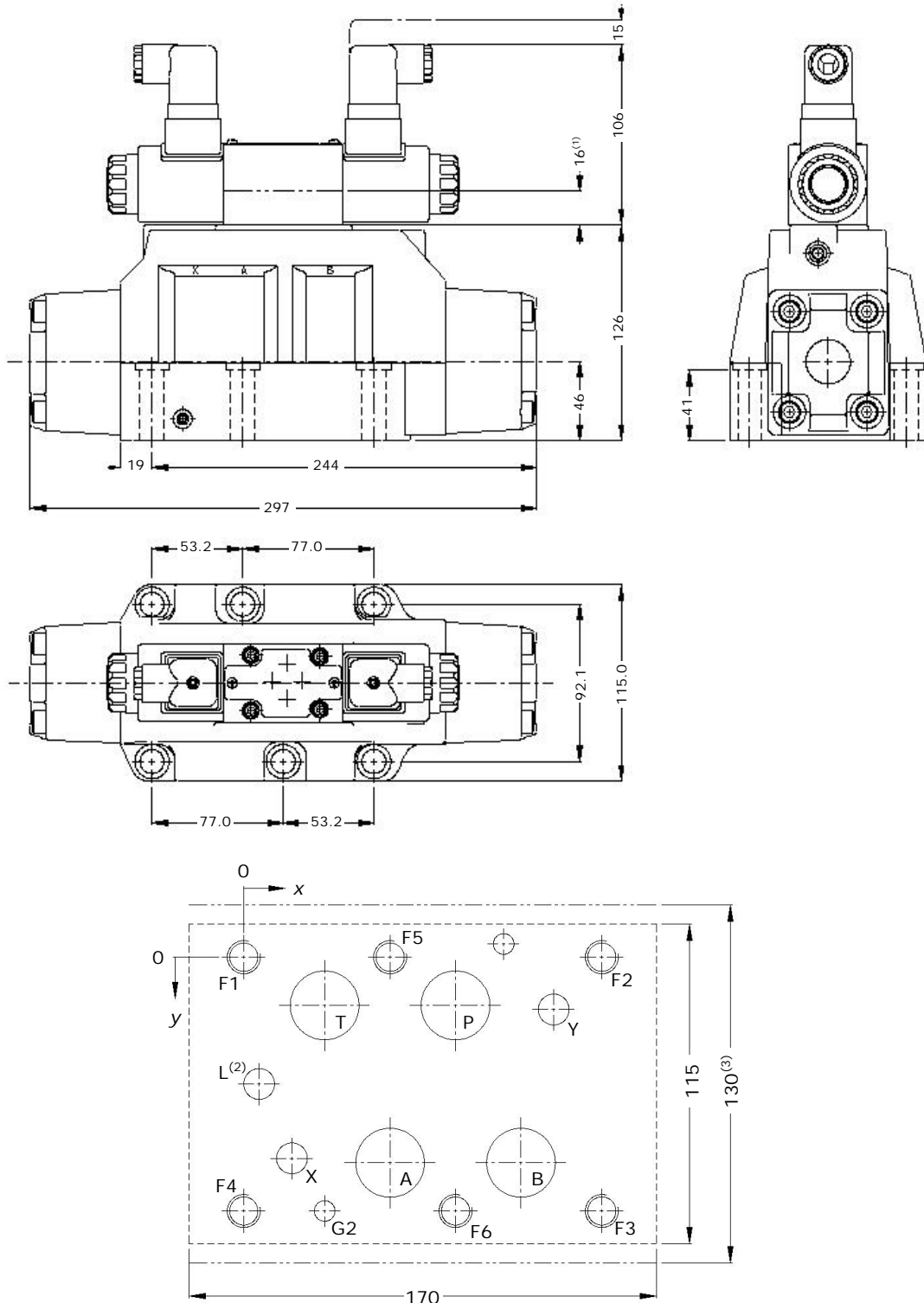
Axis	P	A	B	T	L	X	Y	G1	G2	F1	F2	F3	F4	F5	F6
	Ø17.5	Ø17.5	Ø17.5	Ø17.5	Ø6.3	Ø6.3	Ø6.3	Ø4.0	Ø4.0	M10	M10	M10	M10	M6	M6
x	50.0	34.1	65.9	18.3	0.0	76.6	88.1	76.6	18.3	0	101.6	101.6	0	34.1	50
y	14.3	55.6	55.6	14.3	34.9	15.9	57.2	0	69.9	0	0	69.9	69.9	-1.6	71.5

(1) Height of cover plate for Hydraulically operated Model 4DP

(2) Not used in spring centered valves

(3) Minimum distance from centerline to centerline between two identical valves placed on a manifold block

Installation Dimensions 4DP25/4DEP25



Axis	P	A	B	T	L	X	Y	G1	G2	F1	F2	F3	F4	F5	F6
	Ø25.0	Ø25.0	Ø25.0	Ø25.0	Ø11.2	Ø11.2	Ø11.2	Ø7.5	Ø7.5	M12	M12	M12	M12	M12	M12
x	77.0	53.2	100.8	29.4	5.6	17.5	112.7	94.5	29.4	0.0	130.2	130.2	0.0	53.2	77
y	17.5	74.6	74.6	17.5	46.0	73.0	19.0	-4.8	92.1	0.0	0.0	92.1	92.1	0.0	92.1

(1) Height of cover plate for Hydraulically operated Model 4DP

(2) Not used in spring centered valves

(3) Minimum distance from centerline to centerline between two identical valves placed on a manifold block



Directional Control Valves,
Hydraulically Operated, CETOP 7 and 8

ENGINEERING 6/6

Y02701/09.09

Size 16 and 25

350 bar

650lpm

Notes

Blank area for notes.